

FIFTH WHEEL

PRODUCT HIGHLIGHTS

2020



OUR MISSION

Providing our wide range of products to our customers at lowest available prices without compromising on high standards and customer satisfaction with our identity as a manufacturer and a supplier.

OUR VISION

Rising to the top in aftermarket sector by giving utmost important to labour and technology investments with an innovative and responsible identity SAMPA, headquarter's being located in Samsun, 80.000 m2 integrated factory campus located Industrial Zone in the city of Samsun, Turkey. SAMPA is a global company with offices, warehouses and collaborations in many different places all around the world (e.g; United Arab Emirates, Germany, Russia, Kazakhstan, Nigeria, South Africa, United States of America), exporting to 116 countries.

Our company, as the world's most successful automotive company in manufacturing, procurement and sales, manufactures 15 thousand 358 products in total, with the complete set of 18 different groups from motors to suspension, from cabin to electrical systems in commercial vehicles. Also, it is a significant customer for spare parts as a supplier of over 15 thousand products. It increases every day its variety of products, with a capacity of more than 30 thousand products in total.

Sampa grows each year at a rate of 30-35% because SAMPA continues raising its share in all local markets each year and has competitive advantages. SAMPA has four massive attributes that differentiate from other players in the industry. These differences constitute a definite competitive edge in global markets:

UNIQUE ATTRIBUTES OF SAMPA

Variety of products (more than 30.000 items) in its portfolio, a high availability of products thanks to the high rate storage and warehouses in different locations, and sufficient deliveries.

The fact that it manufactures most of the products in its portfolio, which means it specialises in many products at an advanced level, and achieves dominance over quality thanks to its manufacturer identity.

The fact that it manufactures most of the products in its portfolio at its integrated factory campus with the latest technology and has an advantage of price competition worldwide thanks to its large scale production.

The ability to continuously make better product designs and manufacture them thanks to its 3000 m2 R&D and Test centre with an investment of 10 million USD.

FAST CHANGES, CONTINUOUS DEVELOPMENT

Speedy changes, fast and perfect adaptation and continuous development are the words describing our capability... we believe in perfection and quality approach reflecting on each detail, because excelling even in the tiniest details is highly important for heavy duty vehicles to move across even under difficult conditions.

We have the expertise to manufacture many products at the highest quality level. Therefore, we do not resemble our competitors, which gives us a competitive edge of being different and unique.

We are highly proud to know that our customers and the end users enjoy using our products.

First International Type Approved 5. Wheel Component in Turkey.

SAMPA AUTOMOTIVE has started the manufacturing process for "SAMPA SP C7 F 001"; the one and only international type approved 5th Wheel component in Turkey. SAMPA has proven its capacity to manufacture products at OEM level as a result of gaining the certification of "ECE-R55".

The project commenced at SAMPA R&D Centre 2 years ago. It was completed with the help and support of all SAMPA employees. Just very recently, the final product prototypes have been subjected to testing within the regulations at approved laboratories, an international testing institution in Spain. Following the fruitful outcome, we were qualified for the "E9 55R-01.6120" Certificate by the Ministry of Industry in Spain.

5th Wheel

Fifth wheel provides the link between a semi-trailer and the towing truck and also enables regulations regardless of the vehicle. It is not only a spare part. It is a component that a manufacturer places and secures on top of the new vehicle. It establishes safety criteria. Besides, manufacturing and selling the item without the Type approval is prohibited in many countries.

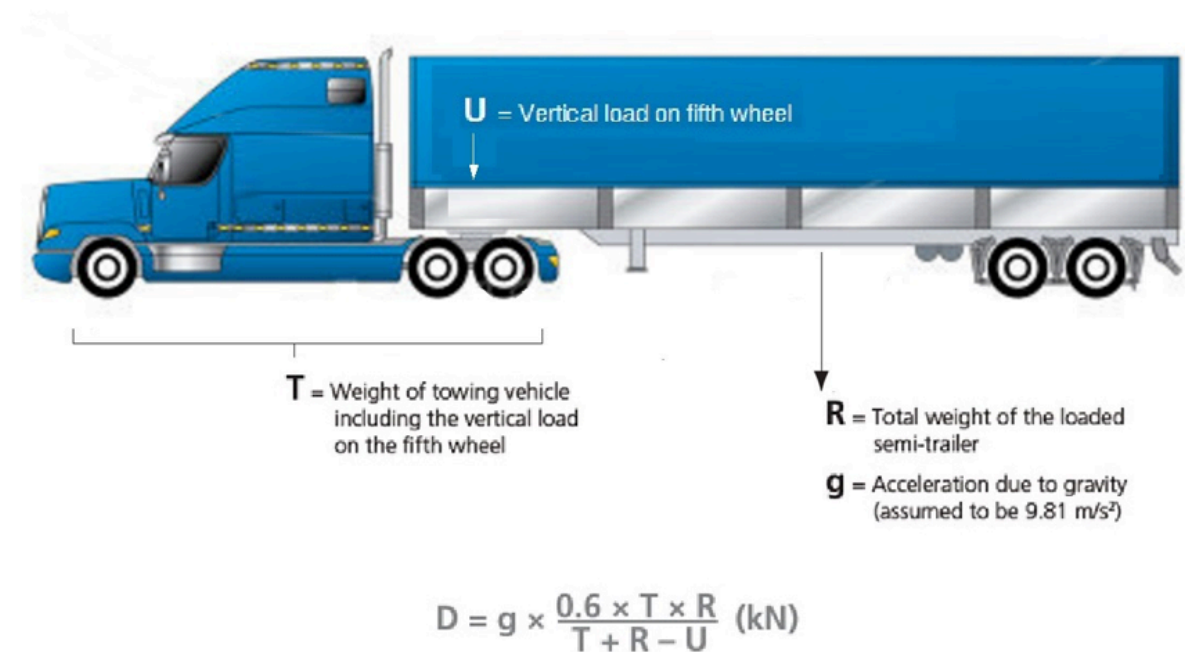
Type Approval

Type Approval or Certificate of Conformity is a procedure for the approval of institutions to demonstrate that a component, system, spare part or a different technical unit part is in conformity with the administrative provisions and technical requirements regarding these Regulations and the regulatory Legislations attached to these regulations. It is granted to a product that meets a minimum set of regulatory, technical and safety requirements. Processes and certifications known as Type Approval in English are generally called Homologation.

ECE R55 (UNECE)

ECE is an abbreviation which stands for " United Nations Economic Commission for Europe "; that establishes the requirements of the regulations approved worldwide.

R55 means Regulation No. 55 "Uniform provisions concerning the approval of mechanical coupling components of combinations of vehicles".



Type Approved

SP C7 D

Family

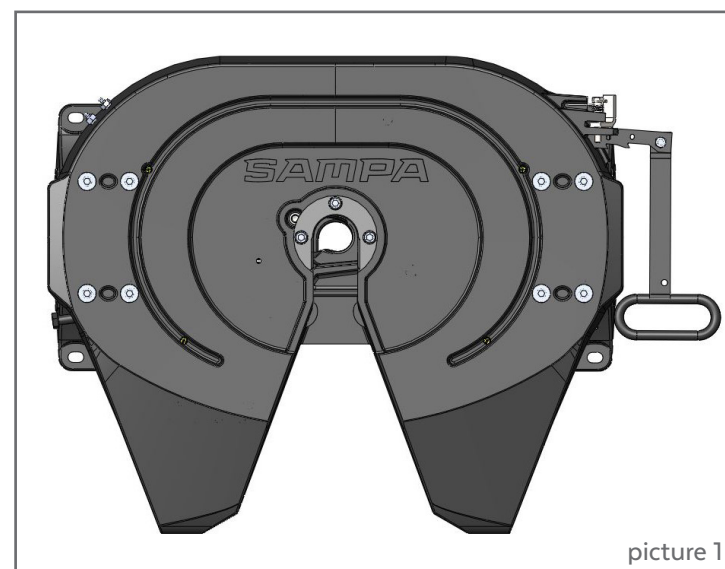


SP C7 D

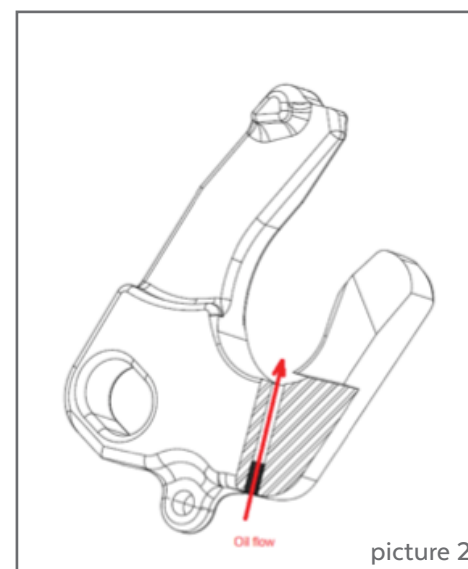
Extra Strong Casting Body!



- Light weight with optimisations! Total 164,5kg
- Lubricating nipple for lock jaw! (picture 1 , picture 2)



picture 1



picture 2

SP C7 D



MINISTERIO
DE INDUSTRIA, COMERCIO Y
TURISMO

DIRECCIÓN GENERAL DE INDUSTRIA Y
DE LA PEQUEÑA Y MEDIANA EMPRESA
SUBDIRECCIÓN GENERAL DE
CALIDAD Y SEGURIDAD INDUSTRIAL



E9*55R01/07*6183*02

Página / Page 1/ 3

Comunicación relativa a/ *Communication concerning:*

- concesión de la homologación⁽¹⁾ / *approval granted* (1)
- extensión de la homologación⁽¹⁾ / *approval extended* (1)
- denegación de la homologación⁽¹⁾ / *approval refused*⁽¹⁾
- retirada de la homologación⁽¹⁾ / *approval withdrawn*⁽¹⁾
- cese definitivo de la producción⁽¹⁾ / *production definitely discontinued*⁽¹⁾

de un tipo de dispositivo o componente mecánico de acoplamiento en aplicación del Reglamento N° 55 / *of a type of mechanical device or component pursuant to Regulation N° 55*

Número de homologación / *Type-approval number:* **E9*55R01/07*6183**

Número de extensión / *Extension number:* **02**

Motivos de la extensión / *Reason for extension:* Ver informe N° CV20010151 / *See test report No. CV20010151*

1. Denominación comercial o marca del dispositivo o componente / *Trade name or mark of the device or component:*
SAMPA

2. Denominación del tipo de dispositivo o componente utilizada por el fabricante / *Manufacturer's name for the type of device or component:*

Tipo / *Type:* **SP C7 D 001**

Denominación comercial / *Commercial description:* **SP C7 D 002, SP C7 D 003, SP C7 D 004**

3. Nombre y dirección del fabricante / *Manufacturer's name and address:*

SAMPA OTOMOTIV SANAYI VE TICARET A.Ş.

Organize Sanayi Bolgesi OSB No: 31

Kutlukent 55300 Kutluken

Tekkekoy – Samsun / TURKEY

4. En su caso, nombre y dirección del representante del fabricante / *If applicable, name and address of the manufacturer's representative:*
No procede / Not applicable

5. Denominaciones o marcas alternativas aplicadas por el proveedor al dispositivo o componente / *Alternative supplier's name or trade marks applied to the device or component:*
No procede / Not applicable

6. Nombre y dirección de la entidad u organismo que asume la responsabilidad de la conformidad de la producción / *Name and address of company or body taking responsibility for the conformity of production:*

SAMPA OTOMOTIV SANAYI VE TICARET A.Ş.

Organize Sanayi Bolgesi OSB No: 31

Kutlukent 55300 Kutluken

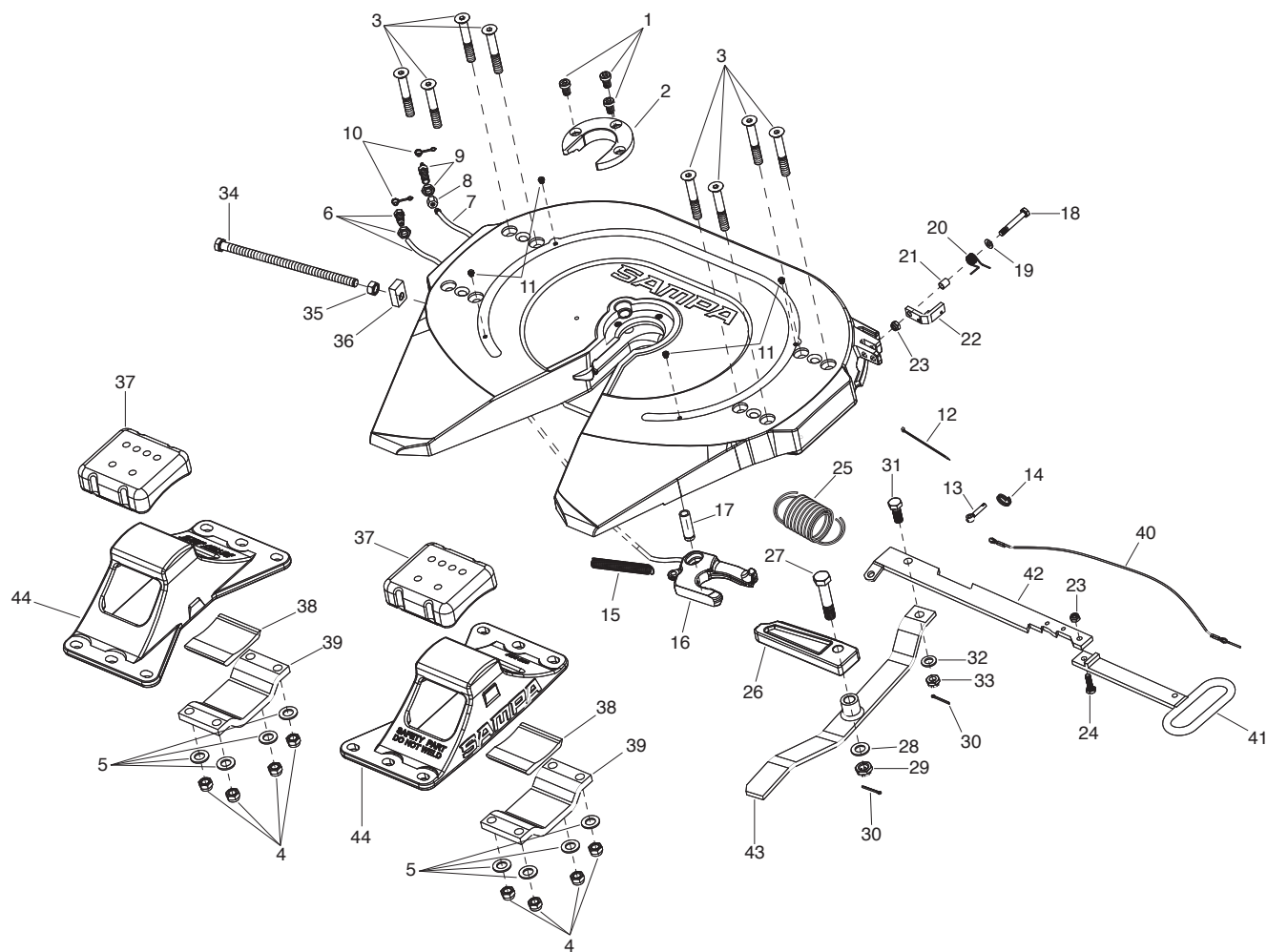
Tekkekoy – Samsun / TURKEY

(1) Tachar lo que no proceda / *Delete where applicable*

Pº DE LA CASTELLANA, 160, 10º - 28071 MADRID
CORREO-E: infovehiculos@mincotur.es

TLF.: 91 349.51.08

SP C7 D Family



SP C7 D Parts

| No. | Sampa No. | Description | Dimension | No. | Sampa No. | Description | Dimension |
|-----|-----------|---------------------------------|--------------|-----|-----------|-----------------------|--------------|
| 1 | 102.219 | Socket Head Bolt | M14x2 / 22 | 25 | 095.059 | Double Tension Spring | ø47x144 |
| 2 | 118.022 | Wearing Ring | ø75 | 26 | 118.023 | Locking Barø | 20x234.5 |
| 3 | 102.213 | CountersunkSocket HeadCap Screw | M16x2 / 110 | 27 | 102.220 | Hexagon Head Screw | M20x2.5 / 95 |
| 4 | 104.112 | Lock Nut | M16x2 | 28 | 105.169 | Washer | ø21.5xø36.5 |
| 5 | 105.183 | Washer | ø17xø30x3 | 29 | 104.220 | Castle Nut | M20x2.5 |
| 6 | 119.038 | Lubricating Oil Line5 | 33 mm | 30 | 103.001 | Split Pin | ø4x36 |
| 7 | 119.267 | Lubricating Tube | - | 31 | 102.218 | Hexagon Head Screw | M16x2 / 40 |
| 8 | 104.495 | NutM | 14x1.5 | 32 | 105.183 | Washer | ø17xø30 |
| 9 | 119.269 | Lubrication BearingM | 14x1.5 | 33 | 104.219 | Castle Nut | M16x2 |
| 10 | 013.012 | Plug | ø6.3 | 34 | 102.649 | Adjusting ScrewM | 16x2 / 415 |
| 11 | 015.216 | Plug | - | 35 | 104.148/1 | NutM | 16x2 |
| 12 | 109.202 | Tie Wrap | 142 mm | 36 | 104.457 | GuideM | 16x2 |
| 13 | 103.016 | Lock Pin | - | 37 | 095.045 | Rubber Mounting1 | 61x177x65 |
| 14 | 117.020 | Spring | - | 38 | 095.046 | Rubber Mounting1 | 05x115x16 |
| 15 | 117.016 | Spring | ø18x79.5 | 39 | 114.568 | Bridge | - |
| 16 | 118.020 | Lock Jaw | 2" | 40 | 119.042 | Latch Cord + Spring | 690 mm |
| 17 | 101.316 | Pin For Lock | ø47x65 | 41 | 119.264 | Handle | 356/116 |
| 18 | 102.570 | Hexagon Head Screw | M10x1.5 / 70 | 42 | 119.263 | Handle | - |
| 19 | 107.007 | Washer | ø10.5xø20 | 43 | 119.236 | Lever - | |
| 20 | 117.177 | Spring | - | 44 | 1118.387 | Pedestal | H: 185 |
| 21 | 110.161 | Noose- | | 44 | 1118.A150 | Pedestal | H: 150 |
| 22 | 119.234 | Latch- | | 44 | 1118.A151 | Pedestal | H: 250 |
| 23 | 104.107 | Lock Nut | M10x1.5 | 44 | 1118.A152 | Pedestal | H: 300 |
| 24 | 102.223 | Hexagon Head Screw | M10x1.5 / 35 | | | | |

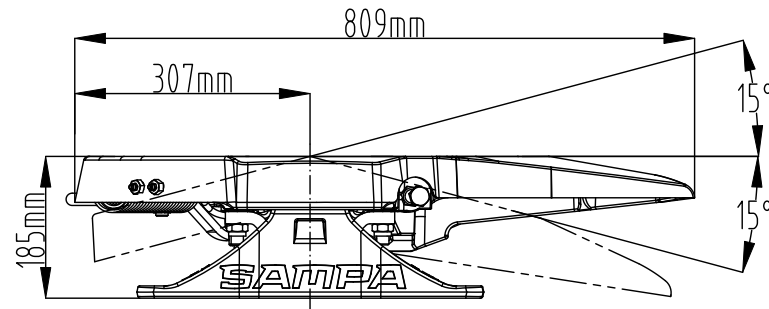
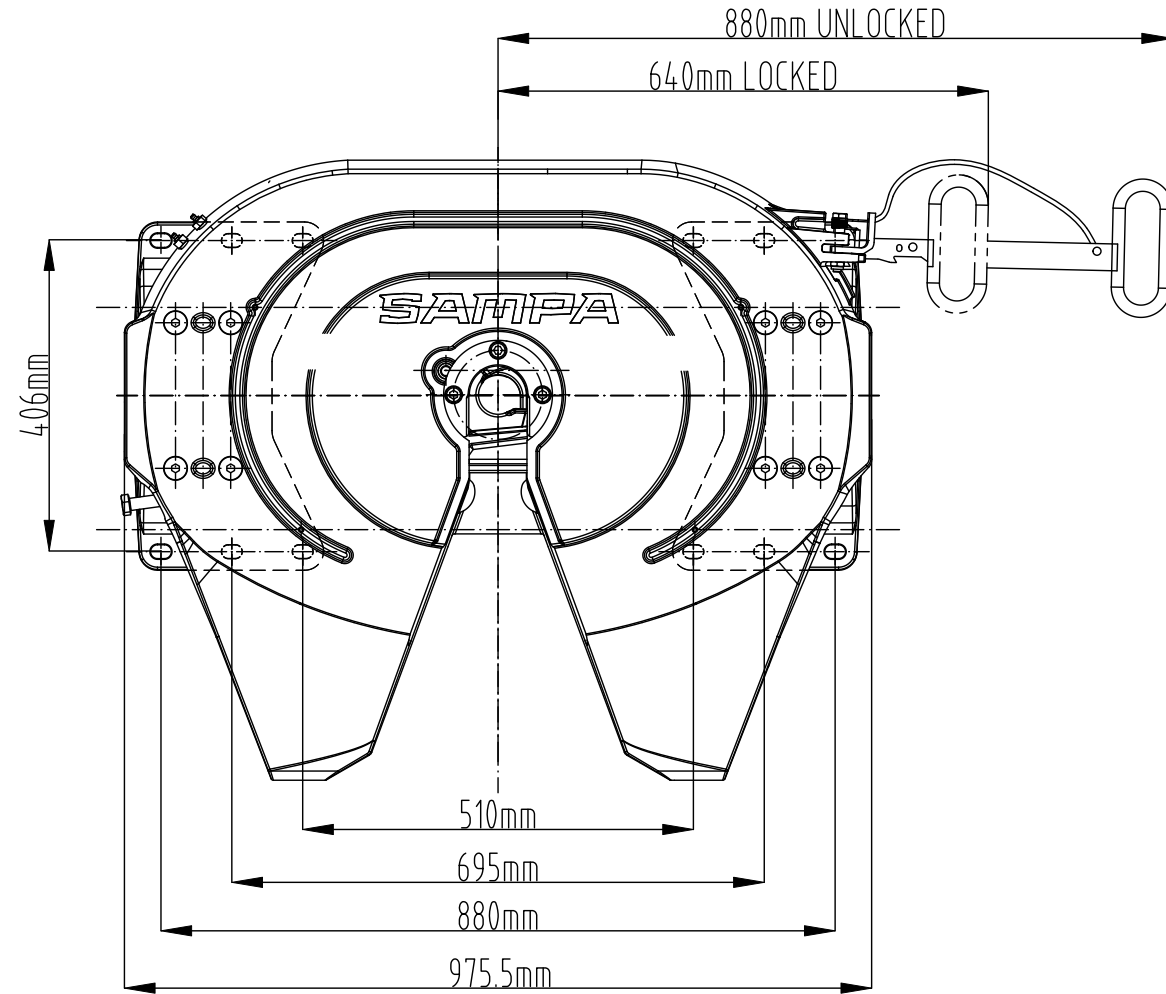
Repair Kits

| Pict. | Sampa Nr. | Description | Pict. | Sampa Nr. | Description |
|-------|-----------|-------------------------|-------|-----------|-------------------------|
| A | 096.535 | Repair Kit, Fifth Wheel | H | 095.653 | Repair Kit, Fifth Wheel |
| B | 095.563 | Repair Kit, Fifth Wheel | I | 095.538 | Repair Kit, Fifth Wheel |
| C | 095.560 | Repair Kit, Fifth Wheel | J | 095.541 | Repair Kit, Fifth Wheel |
| D | 095.561 | Repair Kit, Fifth Wheel | K | 095.654 | Repair Kit, Fifth Wheel |
| E | 095.535 | Repair Kit, Fifth Wheel | L | 095.950 | Repair Kit, Fifth Wheel |
| F | 095.534 | Repair Kit, Fifth Wheel | M | 095.540 | Repair Kit, Fifth Wheel |
| G | 095.547 | Repair Kit, Fifth Wheel | | | |



SP C7 D 001

GENERAL DIMENSIONS



Suitable for 2" king pins (G 50) as per ECE R55-01, DIN 74080, ISO 337
and steering wedges as per ECE R55-01, DIN 74085

SP C7 D 001

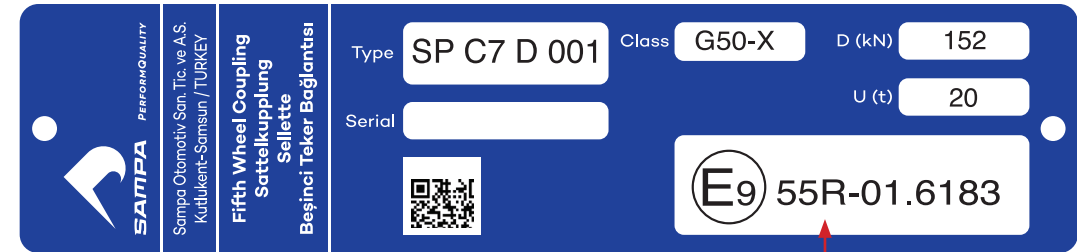
TECHNICAL DATA

| | |
|-------------------|--|
| Surface diameter | : 37" |
| King pin diameter | : 2" |
| Total Height | : 185 mm |
| D value | : 152 kN (Drawbar value) |
| U value | : 20 Tonnes (Vertical load on fifth wheel) |
| CRN | : 51041 |

- Lubrication on lock jaw
- Prepared for surface lubrication option short handle without knuckle

Australian Standards Approved

Look for this plate on the fifth wheel!



Type Approval Number

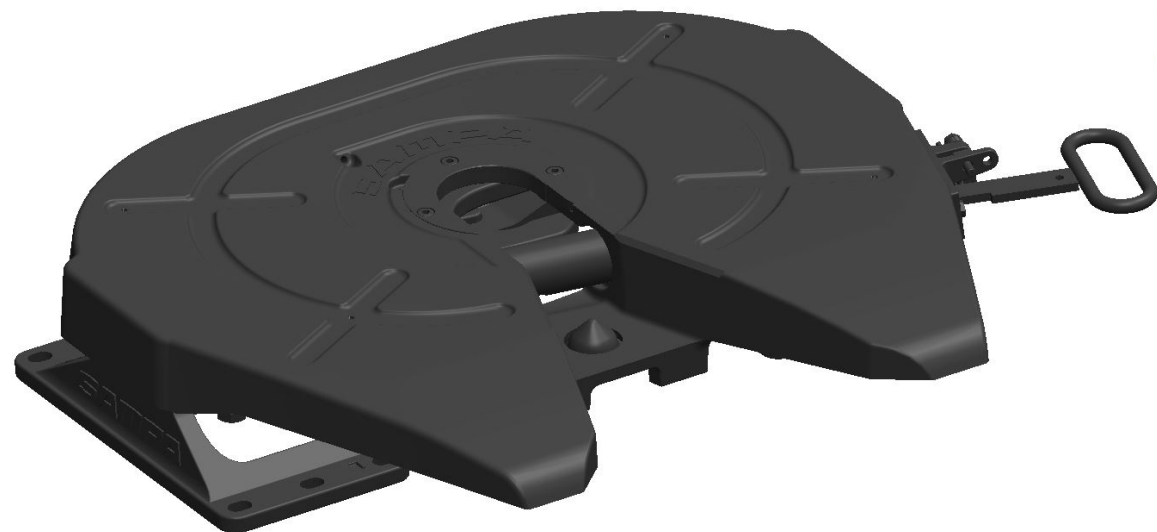


SP C8 D1 (3,5") Family

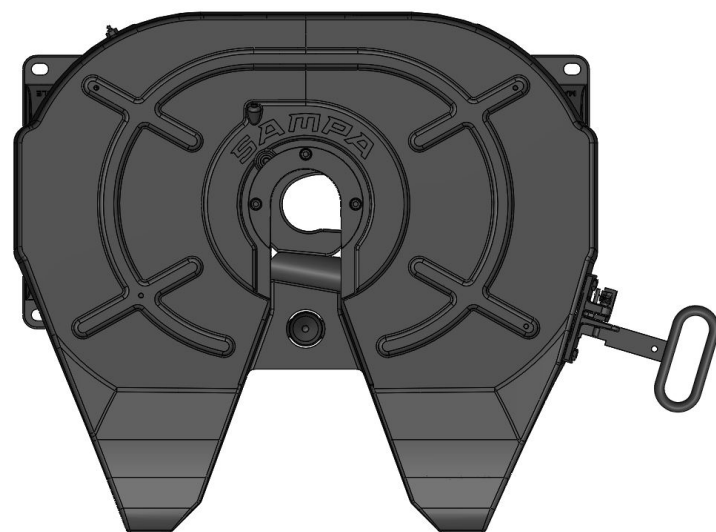


SP C8 D1 (3,5")

Extra Strong Casting Body!



- Light weight with optimisations! Total 195,5kg



SP C8 D1 (3,5")



MINISTERIO
DE INDUSTRIA, COMERCIO Y
TURISMO

DIRECCIÓN GENERAL DE INDUSTRIA Y
DE LA PEQUEÑA Y MEDIANA EMPRESA

SUBDIRECCIÓN GENERAL DE
CALIDAD Y SEGURIDAD INDUSTRIAL



E9*55R01/07*6221*01

Página / Page 1/ 3

Comunicación relativa a/ *Communication concerning:*

- concesión de la homologación(1)/ *approval granted (1)*
- extensión de la homologación(1) / *approval extended (1)*
- denegación de la homologación⁽¹⁾/ *approval refused⁽¹⁾*
- retirada de la homologación⁽¹⁾/ *approval withdrawn⁽¹⁾*
- cese definitivo de la producción⁽¹⁾/ *production definitely discontinued⁽¹⁾*

de un tipo de dispositivo o componente mecánico de acoplamiento en aplicación del Reglamento N° 55 / *of a type of mechanical device or component pursuant to Regulation N° 55*

Número de homologación / *Type-approval number:* **E9*55R01/07*6221**

Número de extensión / *Extension number:* **01**

Motivos de la extensión / *Reason for extension:* Ver informe N° CV20020003/ *See test report No. CV20020003*

1. Denominación comercial o marca del dispositivo o componente / *Trade name or mark of the device or component:*
SAMPA
2. Denominación del tipo de dispositivo o componente utilizada por el fabricante / *Manufacturer's name for the type of device or component:*

Tipo / *Type:* **SP C8 D1 002**

Denominación comercial / *Commercial description:* **SP C8 D1 005**

3. Nombre y dirección del fabricante / *Manufacturer's name and address:*

SAMPA OTOMOTIV SANAYI VE TICARET A.Ş.

Organize Sanayi Bolgesi OSB No: 31

Kutlukent 55300 Kutluken

Tekkekoy – Samsun / TURKEY

4. En su caso, nombre y dirección del representante del fabricante / *If applicable, name and address of the manufacturer's representative:*
No procede / Not applicable

5. Denominaciones o marcas alternativas aplicadas por el proveedor al dispositivo o componente / *Alternative supplier's name or trade marks applied to the device or component:*
No procede / Not applicable

6. Nombre y dirección de la entidad u organismo que asume la responsabilidad de la conformidad de la producción / *Name and address of company or body taking responsibility for the conformity of production:*

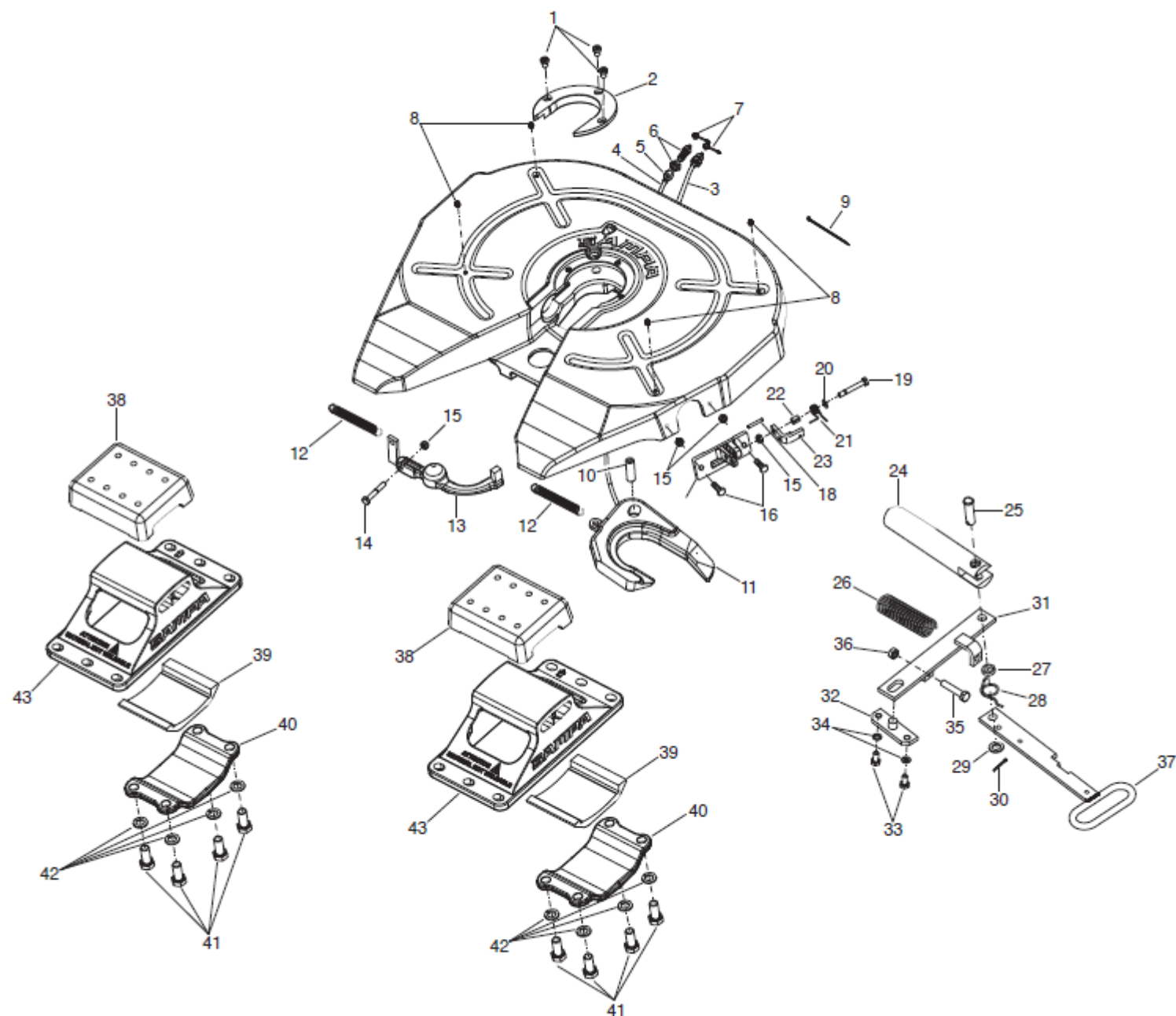
SAMPA OTOMOTIV SANAYI VE TICARET A.Ş.

Organize Sanayi Bolgesi OSB No: 31

Kutlukent 55300 Kutluken

Tekkekoy – Samsun / TURKEY

SP C8 D1 Family (3,5")



SP C8 D1 Parts (3,5")

| No. | Sampa No. | Description | Dimension | No. | Sampa No. | Description | Dimension |
|-----|-----------|----------------------|----------------------|-----|------------|--------------------|---------------|
| 1 | 102.222 | Socket Head Bolt | M12x1.75 / 16 | 23 | 119.234 | Latch | - |
| 2 | 118.026 | Wearing Ring | ø115.5 | 24 | 101.539 | Locking Bar | - |
| 3 | 119.038 | Lubricating Oil Line | 533 mm | 25 | 101.540 | Pin For Lock | ø20x71.5 |
| 4 | 119.268 | Lubrication Tube | - | 26 | 117.019 | Spring | - |
| 5 | 104.495 | Nut | M14x1.5 | 27 | 105.729 | Washer | ø21xø30x8 |
| 6 | 119.269 | Lubrication Bearing | M14x1.5 | 28 | 117.197 | Spring | - |
| 7 | 013.012 | Plug | ø6.3 | 29 | 105.548/1 | Washer | ø21xø34x3 |
| 8 | 015.216 | Plug | - | 30 | 103.031 | Split Pin | DIN 94-6.3x50 |
| 9 | 109.202 | Tie Wrap | 142 mm | 31 | 119.266 | Lever | - |
| 10 | 101.318 | Pin For Lock | ø19,5x60 | 32 | 119.262 | Lever Bearing | - |
| 11 | 118.052 | Lock Jaw | 3 1/2" | 33 | 102.221 | Hexagon Head Screw | M12x1.75 / 25 |
| 12 | 117.018 | Spring | ø20x87.5 | 34 | 107.086 | Spring Washer | ø12.5 |
| 13 | 096.202 | Locking Lever | - | 35 | 102.568 | Hexagon Head Screw | M14x2 / 70 |
| 14 | 102.567 | Hexagon Head Screw | M10x1.5 / 65 | 36 | 104.196 | Hexagon Nut | M14x2 |
| 15 | 104.107 | Lock Nut | M10x1.5 | 37 | 119.265 | Handle | - |
| 16 | 102.223 | Hexagon Head Screw | M10x1.5 / 35 | 38 | 095.057 | Rubber Mounting | 191x240x66 |
| 17 | 118.277 | Latch Holder | - | 39 | 095.058 | Rubber Mounting | 150x184x38.5 |
| 18 | 114.270 | Spring Pin | DIN EN ISO 8752-6x40 | 40 | 118.276 | Bridge | - |
| 19 | 102.570 | Hexagon Head Screw | M10x1.5 / 70 | 41 | 102.214 | Hexagon Head Screw | M20x2.5 / 45 |
| 20 | 107.007 | Washer | ø10.5xø20 | 42 | 107.064 | Spring Washer | ø20 |
| 21 | 117.198 | Spring | - | 43 | 1118.386 | Pedestal | H: 190 |
| 22 | 110.161 | Noose | - | 43 | 11118.A206 | Pedestal | H: 250 |
| | | | | 43 | 1118.A207 | Pedestal | H: 160 |

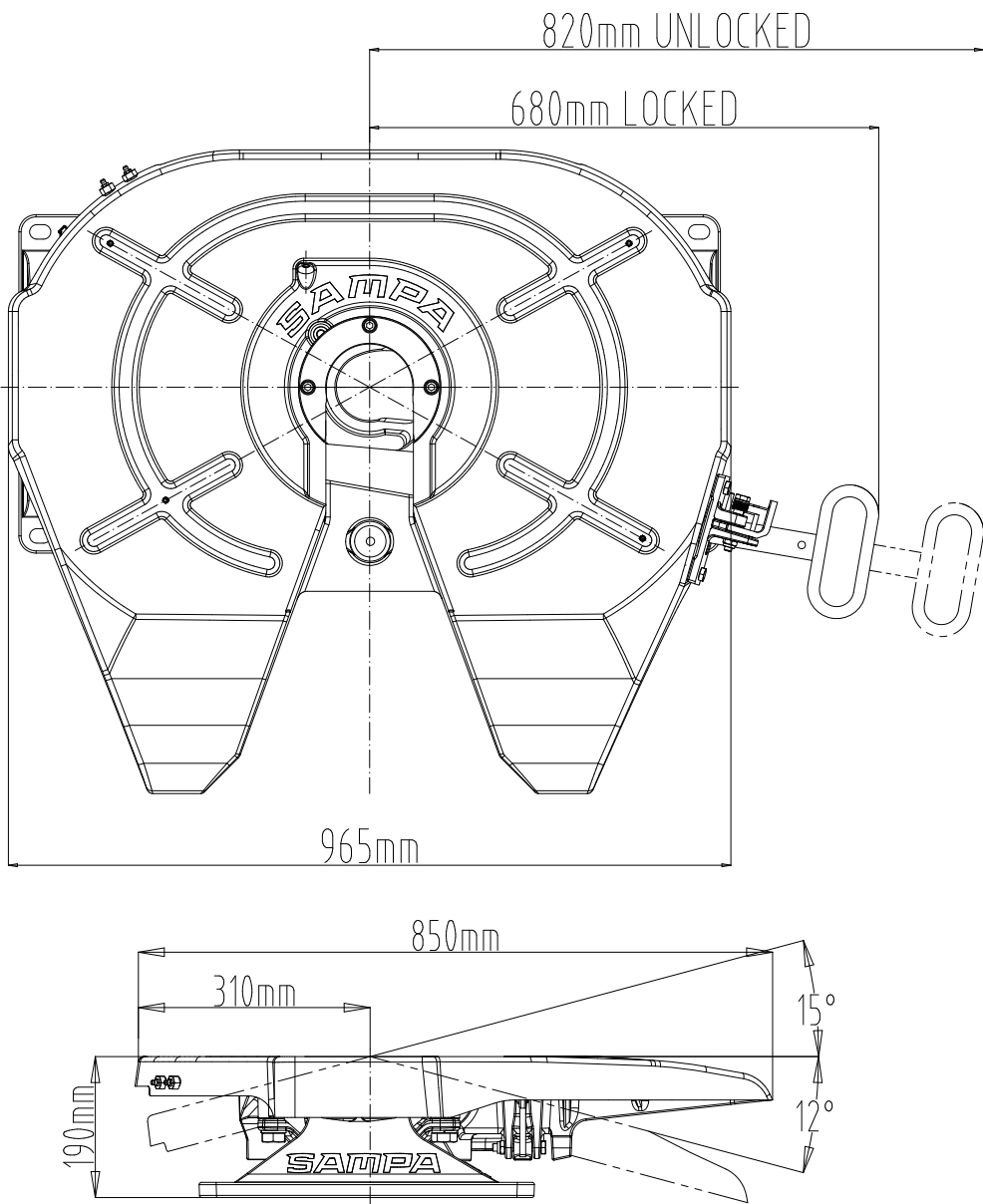
Repair Kits

| Pict. | Sampa Nr. | Description | Pict. | Sampa Nr. | Description |
|-------|-----------|-------------------------|-------|-----------|-------------------------|
| A | 096.532 | Repair Kit, Fifth Wheel | F | 095.537 | Repair Kit, Fifth Wheel |
| B | 095.561 | Repair Kit, Fifth Wheel | G | 095.536 | Repair Kit, Fifth Wheel |
| C | 096.531 | Repair Kit, Fifth Wheel | H | 095.949 | Repair Kit, Fifth Wheel |
| D | 096.530 | Repair Kit, Fifth Wheel | I | 095.657 | Repair Kit, Fifth Wheel |
| E | 096.535 | Repair Kit, Fifth Wheel | | | |



SP C8 D1 002 (3,5")

GENERAL DIMENSIONS



Suitable for 3 1/2" king pins (S) as per ECE R55-01, DIN 74083, ISO 4086 and steering wedges as per ECE R55-01, 94/20/EC.

SP C8 D1 002 (3,5")

TECHNICAL DATA

| | | |
|-------------------|---|-----------|
| Surface diameter | : | 38" |
| King pin diameter | : | 3.5" |
| Total Height | : | 190 mm |
| D value | : | 260 kN |
| U value | : | 36 Tonnes |
| CRN | : | 51042 |

- Lubrication on lock jaw and surface

Australian Standards Approved

Look for this plate on the fifth wheel!



Type Approval Number



Fifth Wheel without type approval

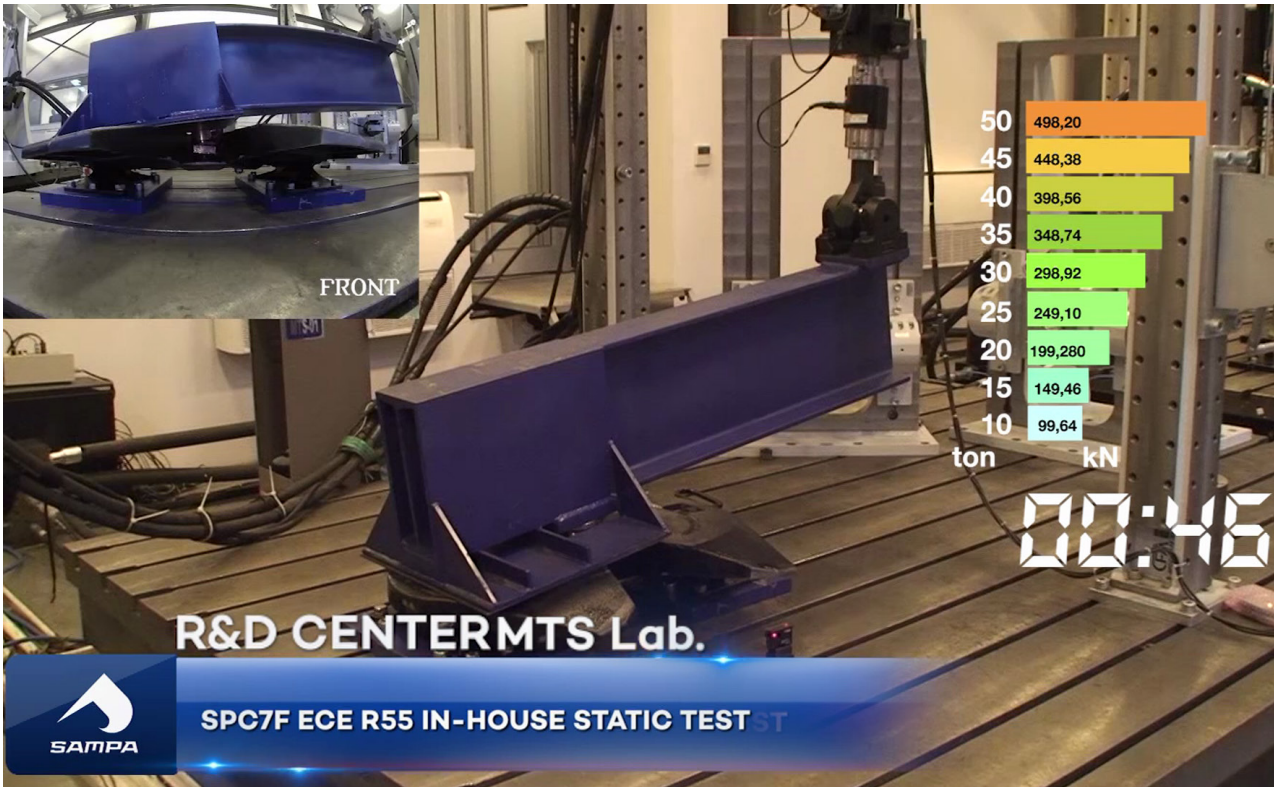
The products have been tested in accordance with the required conditions and approved as certified products with the Type Approval Certificate. The 5th Wheel would have no guarantee without the Type Approval Certificate and there would be no basis whatsoever whether the product has safety conditions. The following accidents may occur if the products have no Type Approval Certificate.

Accidents may happen like bellow



Designed and Tested for extreme conditions!

IN HOUSE STATIC TEST VIDEO



“Sampa Testing Video”



SAMPA OTOMOTIV SANAYİ VE TİCARET A.Ş.

HEADQUARTERS

Yavuz Sultan Selim Bulvarı Alemdag
Cad. Parla Vista AVM B-Blok Kat:10 T 00 90 212 707 59 00
Beykent / Beylikduzu - İSTANBUL / TURKEY F 00 90 212 872 80 84

FACTORY & WAREHOUSE

Sabanoglu OSB Mahallesi Organize
Sanayi Bulvarı No: 31 T 00 90 362 362 63 00
Tekkeköy - SAMSUN / TURKEY F 00 90 362 266 93 58